

Blaine T. Johnson
100 West Broadway, Suite 250
PO Box 2798
Bismarck, ND 58502-2798
701.223.6585

September 11, 2015

Mr. Darrell Nitschke
Executive Director
North Dakota Public Service Commission
600 E. Boulevard Ave., Dept. 408
Bismarck, ND 58505-0480

RE: Dakota Access LLC
Dakota Access Pipeline Project
Case No. PU-14-842
Our File No. 31-536-001

via E-mail and U.S. Mail

Dear Mr. Nitschke:

Pursuant to N.D. Admin. Code § 69-02-02-07(1), Dakota Access, LLC hereby submits an original and ten copies of seventeen route adjustments which have been made to the Application for Certificate of Corridor Compatibility and Route Permit for the Dakota Access Pipeline Project.

Also enclosed please find an Affidavit of Service by Mail.

Please contact me should you have any questions.

Sincerely,

CROWLEY FLECK PLLP



Blaine T. Johnson

Enc.

cc: Zack Pelham
Derrick Braaten
Bryan Van Grinsven
Bryan L. Giese

September 11, 2015

Mr. Darrell Nitschke
Executive Director
North Dakota Public Service Commission
600 E. Boulevard Ave., Dept. 408
Bismarck, ND 58505-0480

RE: Dakota Access LLC
Dakota Access Pipeline Project
Case No. PU-14-842

Dear Mr. Nitschke:

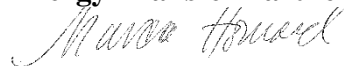
Dakota Access, LLC submitted to the North Dakota Public Service Commission a Consolidated Application for Certificate of Corridor Compatibility and Route Permit for the Dakota Access Pipeline Project on December 22, 2014. Since this original submittal, Dakota Access has identified the need to alter the proposed pipeline route. A total of 17 reroutes are being submitted at this time for incorporation into the final route. All of these reroutes were done at the request of one or more landowners, to avoid or decrease impacts to environmental features, or to facilitate favorable construction conditions. Dakota Access has successfully acquired voluntary easements along each tract where the reroutes are proposed.

All of the route modifications fall within the 1 mile corridor described in the initial application for the Dakota Access Pipeline Project, except for Reroute Location Nos. 12 and 14. It should be noted for the benefit of the Commissioners that Reroute Location No. 14 is the Rick Rice issue raised at the Kildeer hearing on June 15, 2015.

Tables representing the net difference of impact to environmental features as well as avoidance and exclusion criteria is provided with this submittal. Additionally, a map set depicting the locations is also provided.

Dakota Access contracted specialized consultants to perform cultural, wetland and waterbodies, and habitat assessment surveys of the project route in North Dakota and provide the requisite information required by N.D.C.C. Chapt. 49-22 and N.D.A.C. § 69-06-05. The same survey protocol and methodology was implemented along these reroute as was used during the initial field efforts already reported on to the North Dakota Public Service Commission. Field studies for reroutes focused on a general 400 foot wide environmental survey corridor centered on the pipeline; the survey corridor was expanded to 1000 feet wide at some locations to reach a feasible route.

Energy Transfer Partners, L.P.



Monica Howard
Director of Environmental Sciences

Dakota Access Environmental Crossing Analysis for Reroute Locations (1-17)
North Dakota PSC

Filed Route	Within the 1-mile PSC study corridor	Length of Centerline (miles)	Land Cover Type ¹ (acres within workspace)						Wetlands ² (acres within workspace)	Waterbodies ² (number of features crossed by centerline)
			Cultivated Crops	Deciduous Forest	Developed, Open Space	Grasslands/Herbaceous	Pasture/Hay	Shrub/Scrub		
Reroute Location 1										
December 2014	Yes	2.3	56.8	0.3	6.5	12.5	0	0	22.5	0
September 2015	Yes	2.6	73.2	0	3.6	7.2	0	0	12.9	0
<i>Net Difference</i>	--	+0.3	+16.4	-0.3	-2.9	-5.3	--	--	-9.6	--
Reroute Location 2										
December 2014	Yes	1.0	14.0	0	6.0	2.5	0	0	0.1	1
July 2015	Yes	0.9	14.0	0	0.5	3.9	0	0	0.2	0
<i>Net Difference</i>	--	-0.1	--	--	-5.5	+1.4	--	--	+0.1	-1
Reroute Location 3										
December 2014	Yes	0.9	3.4	0	0	15.8	0	0.1	0.5	0
July 2015	Yes	0.8	3.9	0	0	10.4	0	0.3	0.4	0
<i>Net Difference</i>	--	-0.1	+0.5	--	--	-5.4	--	+0.2	-0.1	--
Reroute Location 4										
December 2014	Yes	1.5	14.0	0	0.7	12.2	0	0	0	2
July 2015	Yes	1.6	19.7	0	0.9	10.9	0	0.3	0	0
<i>Net Difference</i>	--	+0.1	+5.7	--	+0.2	-1.3	--	+0.3	--	-2
Reroute Location 5										
December 2014	Yes	0.8	13.2	0	0.3	0	0	0	0	1
July 2015	Yes	1.0	20.1	0	3.8	0	0	0	1.1	0
<i>Net Difference</i>	--	+0.2	+6.9	--	+3.5	--	--	--	+1.1	-1
Reroute Location 6										
December 2014	Yes	1.6	26.6	0.1	0.9	2.1	0.1	0	0	0
July 2015	Yes	2.0	32.7	0	1.8	3.8	0.5	0	0	0
<i>Net Difference</i>	--	+0.4	+6.1	-0.1	+0.9	+1.7	-0.4	--	--	--
Reroute Location 7										
December 2014	Yes	1.9	23.6	0	0.7	6.9	3.0	0	0.1	3
July 2015	Yes	2.3	44.8	0	0.3	0.7	0	0	0	2
<i>Net Difference</i>	--	+0.4	+21.2	--	-0.4	-6.2	-3.0	--	-0.1	-1
Reroute Location 8										
December 2014	Yes	3.0	25.0	0	1.3	15.8	14.2	0.3	0	2
July 2015	Yes	2.6	12.8	0	1.0	18.8	15.5	0.3	0	1
<i>Net Difference</i>	--	-0.4	-12.2	--	-0.3	+3.0	+1.3	--	--	-1
Reroute Location 9										
December 2014	Yes	2.4	41.6	0	2.6	9.9	0	1.5	0	1
September 2015	Yes	3.2	59.0	0	2.1	6.3	0	0	0.3	1
<i>Net Difference</i>	--	+0.8	+17.4	--	-0.5	-3.6	--	-1.5	+0.3	--
Reroute Location 10										
December 2014	Yes	0.4	7.8	0	0.1	1.7	0	0	0	0
September 2015	Yes	0.5	10.4	0	0.1	0.2	0	0	0	0

**Dakota Access Environmental Crossing Analysis for Reroute Locations (1-17)
North Dakota PSC**

Filed Route	Within the 1-mile PSC study corridor	Length of Centerline (miles)	Land Cover Type ¹ (acres within workspace)						Wetlands ² (acres within workspace)	Waterbodies ² (number of features crossed by centerline)
			Cultivated Crops	Deciduous Forest	Developed, Open Space	Grasslands/Herbaceous	Pasture/Hay	Shrub/Scrub		
<i>Net Difference</i>	--	+0.1	+2.6	--	--	-1.5	--	--	--	--
Reroute Location 11										
December 2014	Yes	0.5	9.9	0	0.8	1.0	0	0	0	0
September 2015	Yes	0.5	9.1	0	0.6	0.9	0	0	0	0
<i>Net Difference</i>	--	--	-0.8	--	-0.2	-0.1	--	--	--	--
Reroute Location 12										
December 2014	Yes	1.8	25.2	0	3.1	8.1	0	0	0	1
September 2015	No	2.4	16.3	0	2.1	24.5	0	4.0	0.3	3
<i>Net Difference</i>	--	+0.6	-8.9	--	-1.0	+16.4	--	+4.0	+0.3	+2
Reroute Location 13										
December 2014	Yes	1.4	0	0	0	24.5	0	1.9	0.5	1
September 2015	Yes	1.2	0	0	0	20.0	0	2.0	0	0
<i>Net Difference</i>	--	-0.2	--	--	--	-4.5	--	+0.1	-0.5	-1
Reroute Location 14										
December 2014	Yes	4.4	17.4	3.6	0	60.4	0	1.7	0	2
September 2015	No	4.9	19.9	1.3	0	67.5	0	1.9	0.1	8
<i>Net Difference</i>	--	+0.5	+2.5	-2.3	--	+7.1	--	+0.2	+0.1	+6
Reroute Location 15										
December 2014	Yes	1.5	5.1	1.5	0	22.4	2.1	0	0.5	1
September 2015	Yes	1.5	4.7	1.5	0	19.5	3.2	0.7	0.3	1
<i>Net Difference</i>	--	--	-0.4	--	--	-2.9	+1.1	+0.7	-0.2	--
Reroute Location 16										
December 2014	Yes	0.3	5.1	0	0.8	2.7	0	0	0	1
September 2015	Yes	0.3	1.9	0	0.8	4.5	0	0	0	1
<i>Net Difference</i>	--	--	-3.2	--	--	+1.8	--	--	--	--
Reroute Location 17										
December 2014	Yes	1.0	6.4	0	2.5	14.7	0	0	1.9	0
September 2015	Yes	1.2	5.6	0.2	0.8	10.9	0	0	2.5	2
<i>Net Difference</i>	--	+0.2	-0.8	+0.2	-1.7	-3.8	--	--	+0.6	+2
TOTAL NET DIFFERENCE	--	+3.1	+50	-2.5	-7.9	-3.2	-1.0	+4.0	-8.0	+3
+39.4										

¹ Based on the U.S. Geological Survey National Land Cover Database

² Based on field delineations for areas surveyed and National Wetlands Inventory and National Hydrography Dataset for areas not yet surveyed

Dakota Access Exclusion and Avoidance Criteria Analysis for Reroute Locations (1-17)
North Dakota PSC

Filed Route	Prime Farmlands^a (acres within workspace)	Irrigated Lands (acres within workspace)	Geologically Unstable Areas^b	Wetlands (acres within workspace)	Woodlands (acres within workspace)	Workspace within 100 year Floodplain^c	Historic Resource/ Landmark for avoidance (sites within workspace)	National, State, or County Exclusion Areas (sites within workspace)	T&E/Rare Species Critical Habitat (acres within workspace)	City Limits or Military Installation (sites within workspace)
Reroute Location 1										
December 2014	0.7	0	Low	22.5	0	N/A	0	0	0	0
September 2015	4.2	0	Low	12.9	0	N/A	0	0	0	0
<i>Net Difference</i>	+3.5	--	--	-9.6	--	--	--	--	--	--
Reroute Location 2										
December 2014	0	0	Moderate	0.1	0	No	1	0	0	0
September 2015	0	0	Moderate	0.2	0	No	0	0	0	0
<i>Net Difference</i>	--	--	--	+0.1	--	--	-1	--	--	--
Reroute Location 3										
December 2014	0	0	Moderate	0.5	0.1	No	0	0	0	0
September 2015	0	0	Moderate	0.4	0	No	0	0	0	0
<i>Net Difference</i>	--	--	--	-0.1	-0.1	--	--	--	--	--
Reroute Location 4										
December 2014	0	0	Moderate	0	0	N/A	0	0	0	0
September 2015	0	0	Moderate	0	0	N/A	0	0	0	0
<i>Net Difference</i>	--	--	--	--	--	--	--	--	--	--
Reroute Location 5										
December 2014	0	0	Moderate	0	0	No	0	0	0	0
September 2015	0	0	Moderate	1.1	0	No	0	0	0	0
<i>Net Difference</i>	--	--	--	+1.1	--	--	--	--	--	--
Reroute Location 6										
December 2014	0	0	Moderate	0	0	No	0	0	0	0
September 2015	0	0	Moderate	0	0	No	0	0	0	0
<i>Net Difference</i>	--	--	--	--	--	--	--	--	--	--
Reroute Location 7										
December 2014	0	0	Moderate	0.1	0	No	0	0	0	0
September 2015	0	0	Moderate	0	0	No	0	0	0	0
<i>Net Difference</i>	--	--	--	-0.1	--	--	--	--	--	--
Reroute Location 8										
December 2014	1.1	0	Moderate	0	0	N/A	0	0	0	0

Dakota Access Exclusion and Avoidance Criteria Analysis for Reroute Locations (1-17)
North Dakota PSC

Filed Route	Prime Farmlands^a (acres within workspace)	Irrigated Lands (acres within workspace)	Geologically Unstable Areas^b	Wetlands (acres within workspace)	Woodlands (acres within workspace)	Workspace within 100 year Floodplain^c	Historic Resource/ Landmark for avoidance (sites within workspace)	National, State, or County Exclusion Areas (sites within workspace)	T&E/Rare Species Critical Habitat (acres within workspace)	City Limits or Military Installation (sites within workspace)
September 2015	0.1	0	Moderate	0	0	N/A	0	0	0	0
<i>Net Difference</i>	-1.0	--	--	--	--	--	--	--	--	--
Reroute Location 9										
December 2014	0	0	Moderate	0	0	No	0	0	0	0
September 2015	0	0	Moderate	0.3	0	No	0	0	0	0
<i>Net Difference</i>	--	--	--	+0.3	--	--	--	--	--	--
Reroute Location 10										
December 2014	0	0	Moderate	0	0.3	No	0	0	0	0
September 2015	0	0	Moderate	0	0.3	No	0	0	0	0
<i>Net Difference</i>	--	--	--	--	--	--	--	--	--	--
Reroute Location 11										
December 2014	0	0	Moderate	0	0	N/A	0	0	0	0
September 2015	0	0	Moderate	0	0	N/A	0	0	0	0
<i>Net Difference</i>	--	--	--	--	--	--	--	--	--	--
Reroute Location 12										
December 2014	0	0	Moderate	0	0	N/A	0	0	0	0
September 2015	0	0	Moderate	0.3	0	N/A	0	0	0	0
<i>Net Difference</i>	--	--	--	+0.3	--	--	--	--	--	--
Reroute Location 13										
December 2014	0	0	Moderate	0.5	0	N/A	0	0	0	0
September 2015	0	0	Moderate	0	0	N/A	0	0	0	0
<i>Net Difference</i>	--	--	--	-0.5	--	--	--	--	--	--
Reroute Location 14										
December 2014	0	0	Moderate	0	5.3	N/A	1	0	0	0
September 2015	0	0	Moderate	0.1	1.5	N/A	0	0	0	0
<i>Net Difference</i>	--	--	--	+0.1	-3.8	--	-1	--	--	--
Reroute Location 15										
December 2014	0	0	Moderate	0.5	0	No	0	0	0	0
September 2015	0	0	Moderate	0.3	0	No	0	0	0	0
<i>Net Difference</i>	--	--	--	-0.2	--	--	--	--	--	--

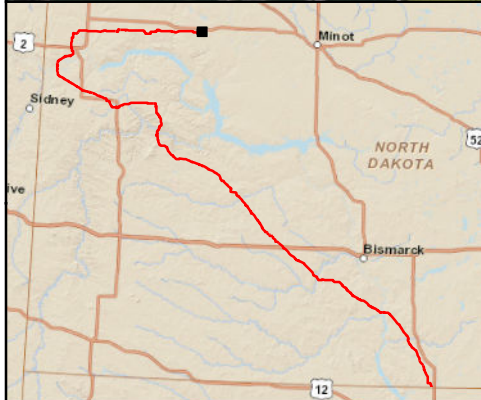
Dakota Access Exclusion and Avoidance Criteria Analysis for Reroute Locations (1-17)
North Dakota PSC

Filed Route	Prime Farmlands^a (acres within workspace)	Irrigated Lands (acres within workspace)	Geologically Unstable Areas^b	Wetlands (acres within workspace)	Woodlands (acres within workspace)	Workspace within 100 year Floodplain^c	Historic Resource/ Landmark for avoidance (sites within workspace)	National, State, or County Exclusion Areas (sites within workspace)	T&E/Rare Species Critical Habitat (acres within workspace)	City Limits or Military Installation (sites within workspace)
Reroute Location 16										
December 2014	2.0	0	Moderate	0	0	N/A	0	0	0	0
September 2015	2.1	0	Moderate	0	0.2	N/A	0	0	0	0
<i>Net Difference</i>	+0.1	--	--	--	+0.2	--	--	--	--	--
Reroute Location 17										
December 2014	0	0	Moderate	1.9	0	N/A	0	0	0	0
September 2015	0	0	Moderate	2.5	0	N/A	0	0	0	0
<i>Net Difference</i>	--	--	--	+0.6	--	--	--	--	--	--
TOTAL NET DIFFERENCE	+2.6	--	--	-8.0	-3.7	N/A	-1	--	--	--

^a All impacts associated with pipeline construction would be temporary, no permanent surface impacts would occur on prime farmlands.

^b Geologically unstable area data from: U.S. Geological Survey Landslide Susceptibility, Low: Low landslide incidence (less than 1.5% of the area is involved), Moderate: Moderate susceptibility to landsliding and low incidence.

^c 100 year Floodplain data from: Federal Emergency Management Agency 100 Year Flood Zones, N/A: data not available for area.



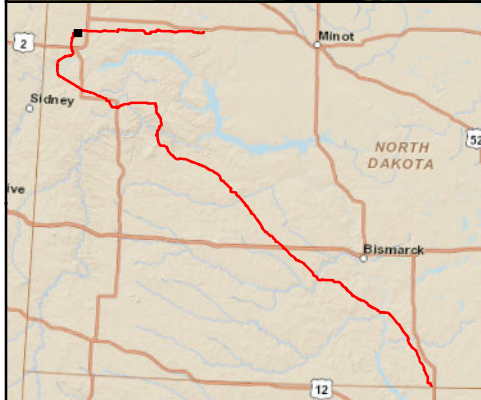
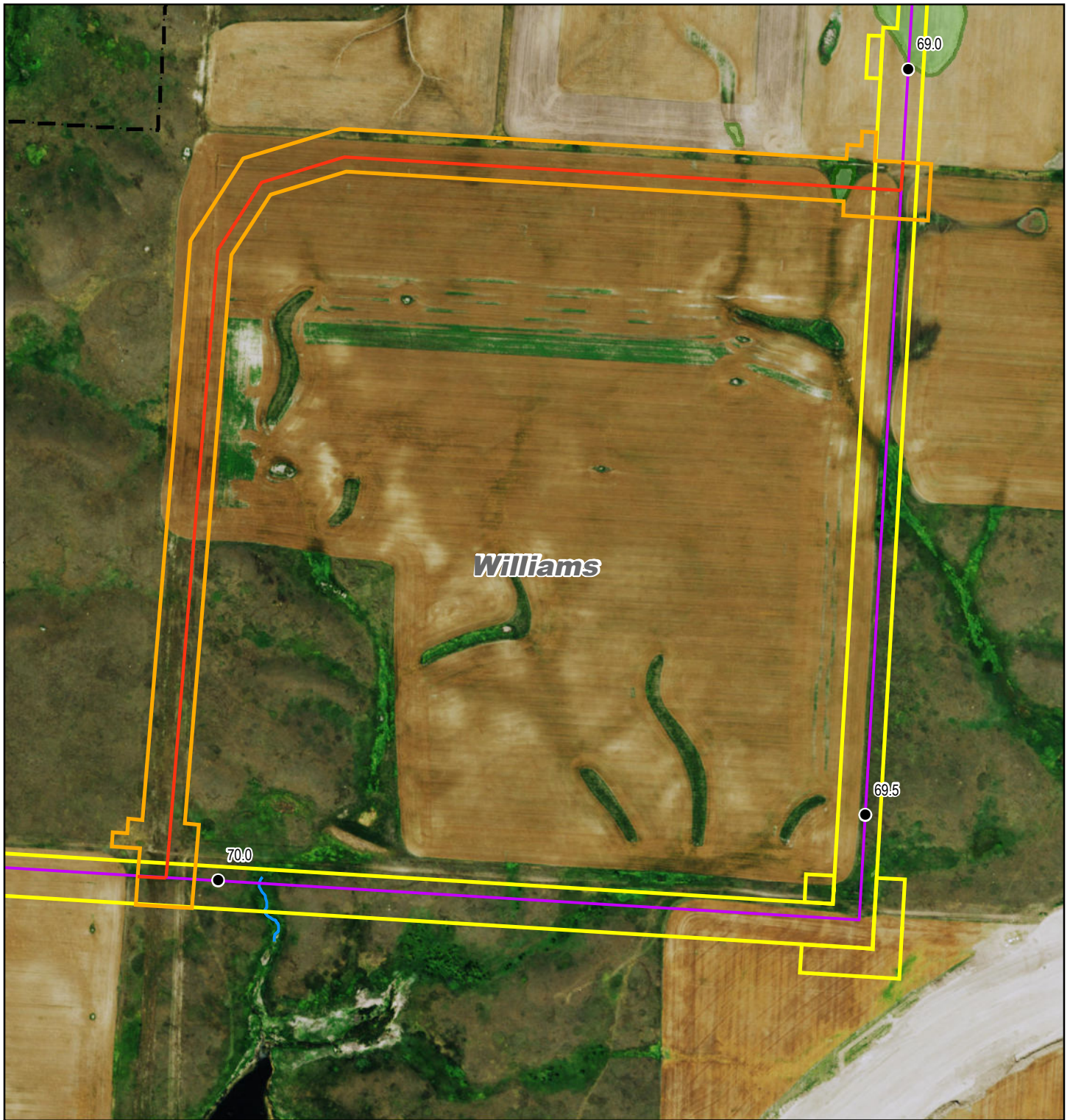
- Milepost
- September 2015 Route
- December 2014 Route
- September 2015 Workspace
- December 2014 Workspace
- Waterbody
- Wetland
- - - PSC 1 Mile Study Area

0 1,250 Feet

DAKOTA ACCESS, LLC

**Dakota Access Pipeline Project
North Dakota PSC
Reroute Location 1**

Page 1 of 18	1:15,000
NAD 1983 UTM Zone 14N	Date: September, 2015



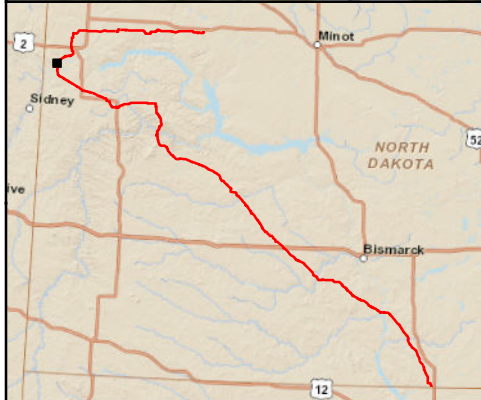
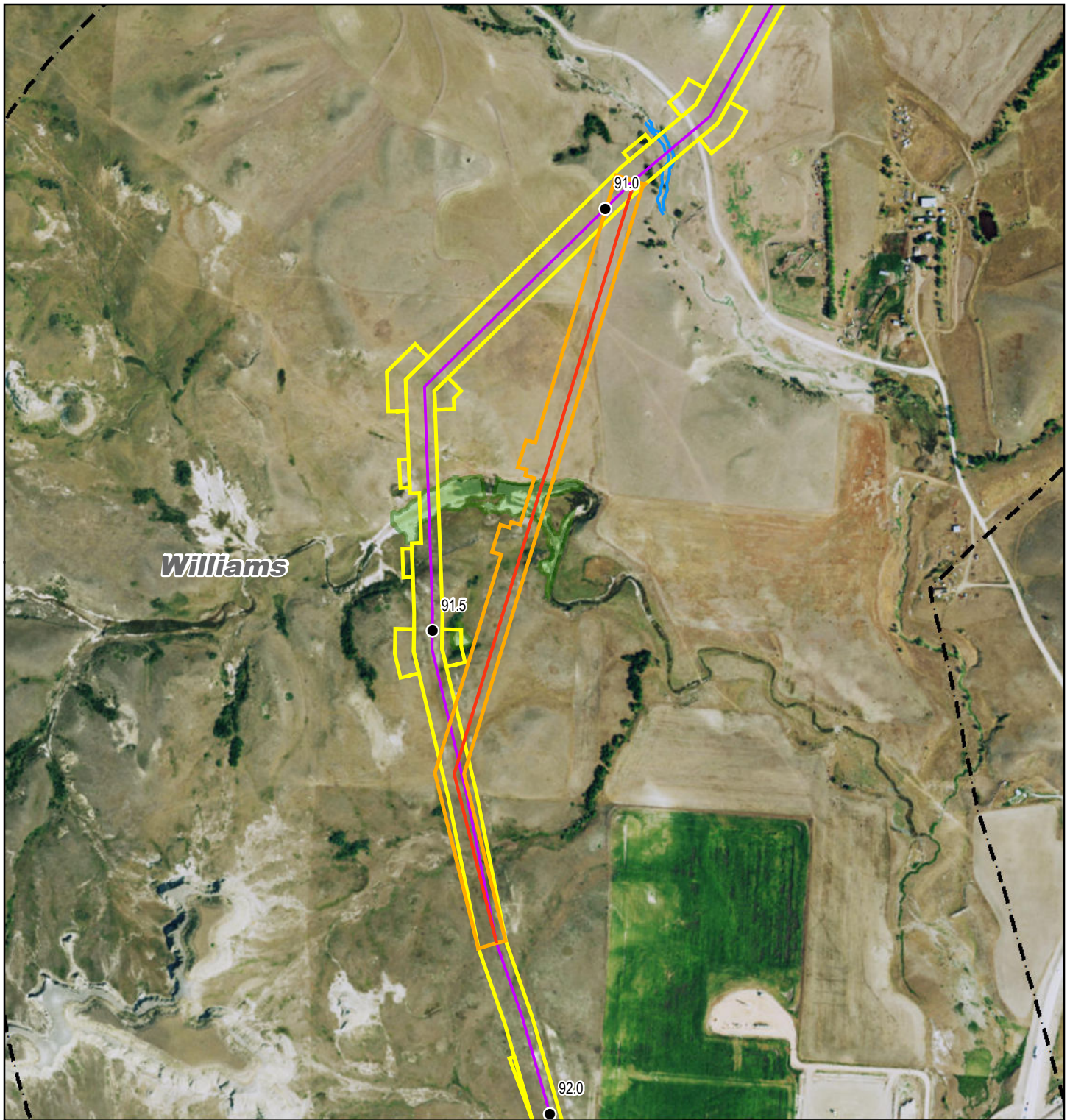
- Milepost
- September 2015 Route
- December 2014 Route
- September 2015 Workspace
- December 2014 Workspace
- Waterbody
- Wetland
- PSC 1 Mile Study Area

0 500 Feet

DAKOTA ACCESS, LLC



**Dakota Access Pipeline Project
North Dakota PSC
Reroute Location 2**

Page 2 of 18	1:6,000
NAD 1983 UTM Zone 14N	Date: September, 2015



- Milepost
- September 2015 Route
- December 2014 Route
- September 2015 Workspace
- December 2014 Workspace
- Waterbody
- Wetland
- PSC 1 Mile Study Area

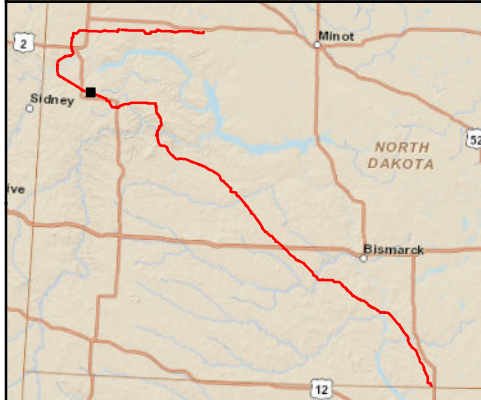
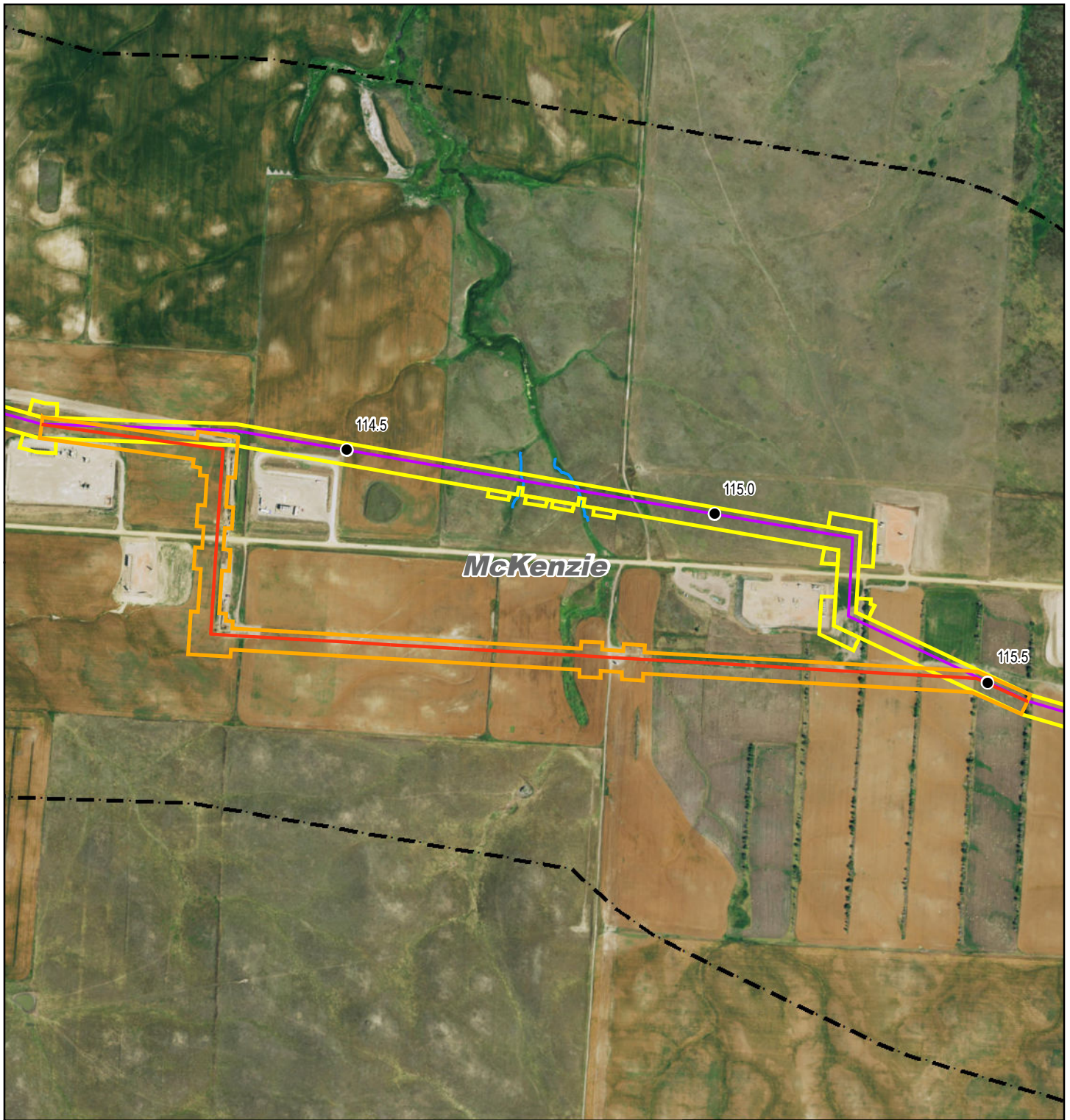
0 750 Feet

DAKOTA ACCESS, LLC



**Dakota Access Pipeline Project
North Dakota PSC
Reroute Location 3**

Page 3 of 18	1:9,000
NAD 1983 UTM Zone 14N	Date: September, 2015



- Milepost
- September 2015 Route
- December 2014 Route
- ▭ September 2015 Workspace
- ▭ December 2014 Workspace
- Waterbody
- Wetland
- ▭ PSC 1 Mile Study Area

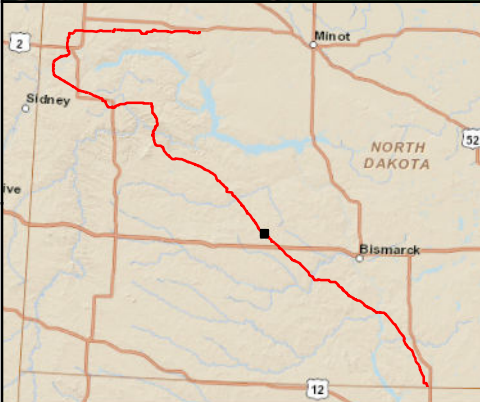
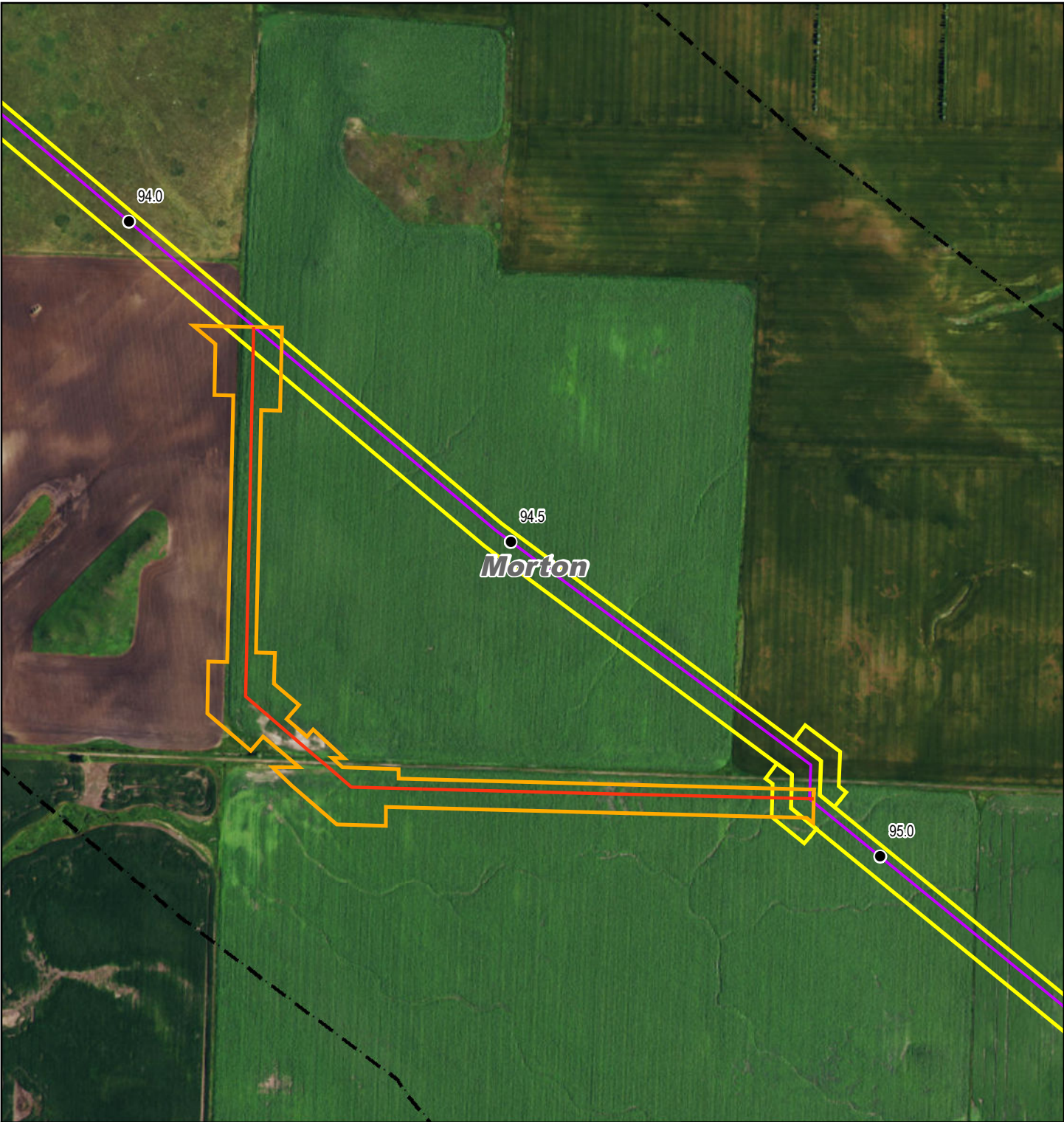
0 1,000 Feet

DAKOTA ACCESS, LLC


**Dakota Access Pipeline Project
North Dakota PSC
Reroute Location 4**

Page 4 of 18	1:12,000
NAD 1983 UTM Zone 14N	Date: September, 2015



- Milepost
- September 2015 Route
- December 2014 Route
- September 2015 Workspace
- December 2014 Workspace
- Waterbody
- Wetland
- PSC 1 Mile Study Area

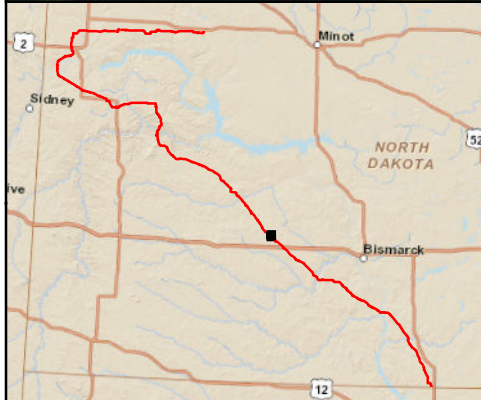
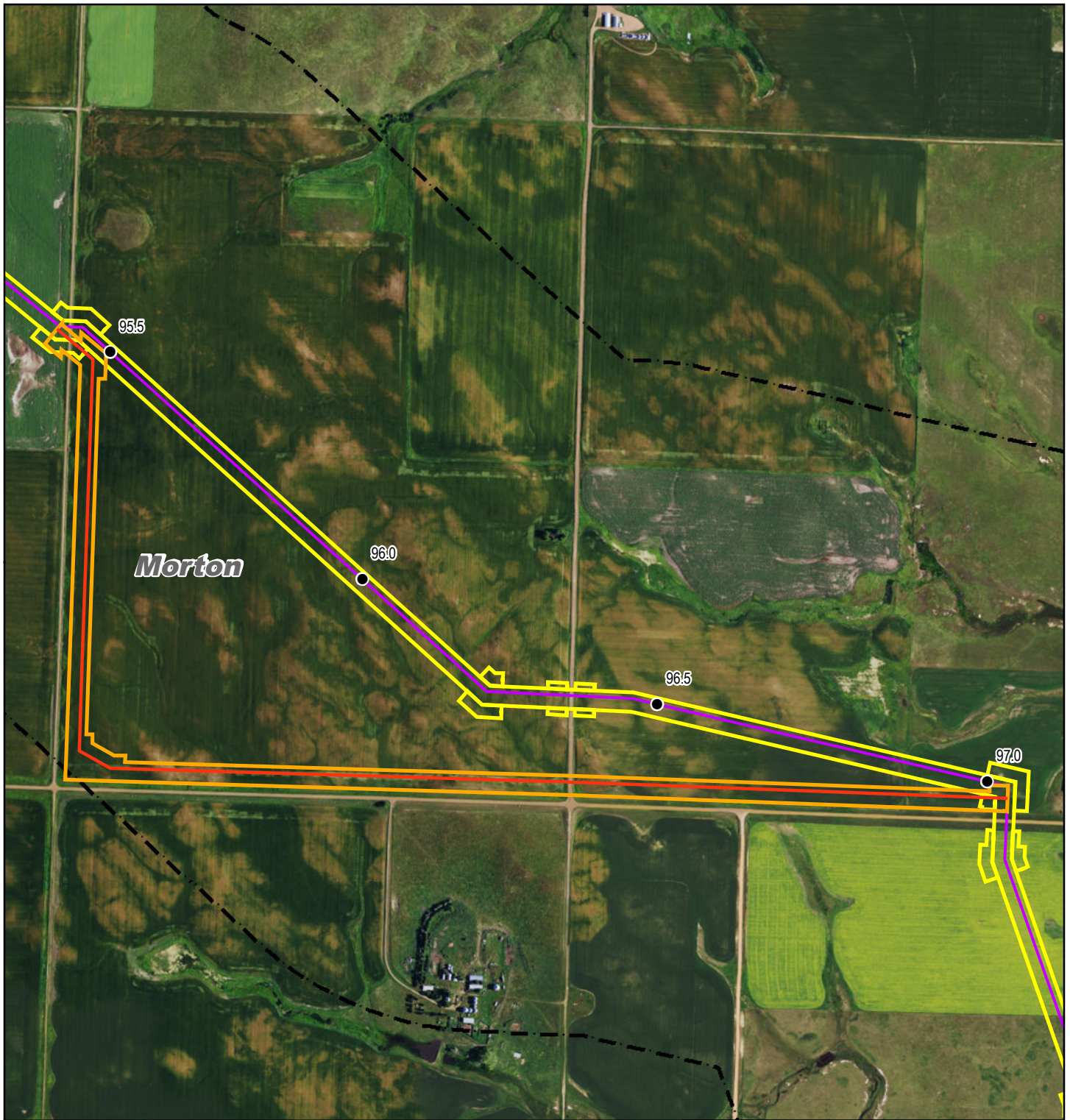
0 750 Feet




DAKOTA ACCESS, LLC



**Dakota Access Pipeline Project
North Dakota PSC
Reroute Location 5**

Page 5 of 18	1:9,000
NAD 1983 UTM Zone 14N	Date: September, 2015



- Milepost
- September 2015 Route
- December 2014 Route
- September 2015 Workspace
- December 2014 Workspace
- Waterbody
- Wetland
- PSC 1 Mile Study Area

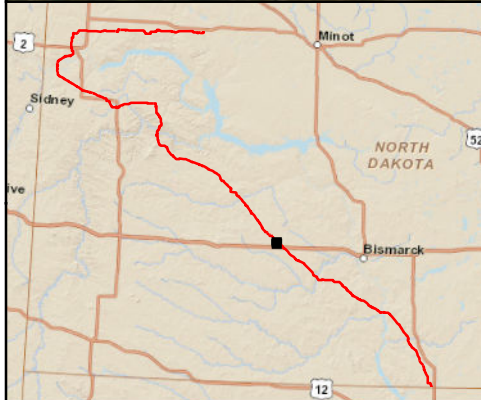
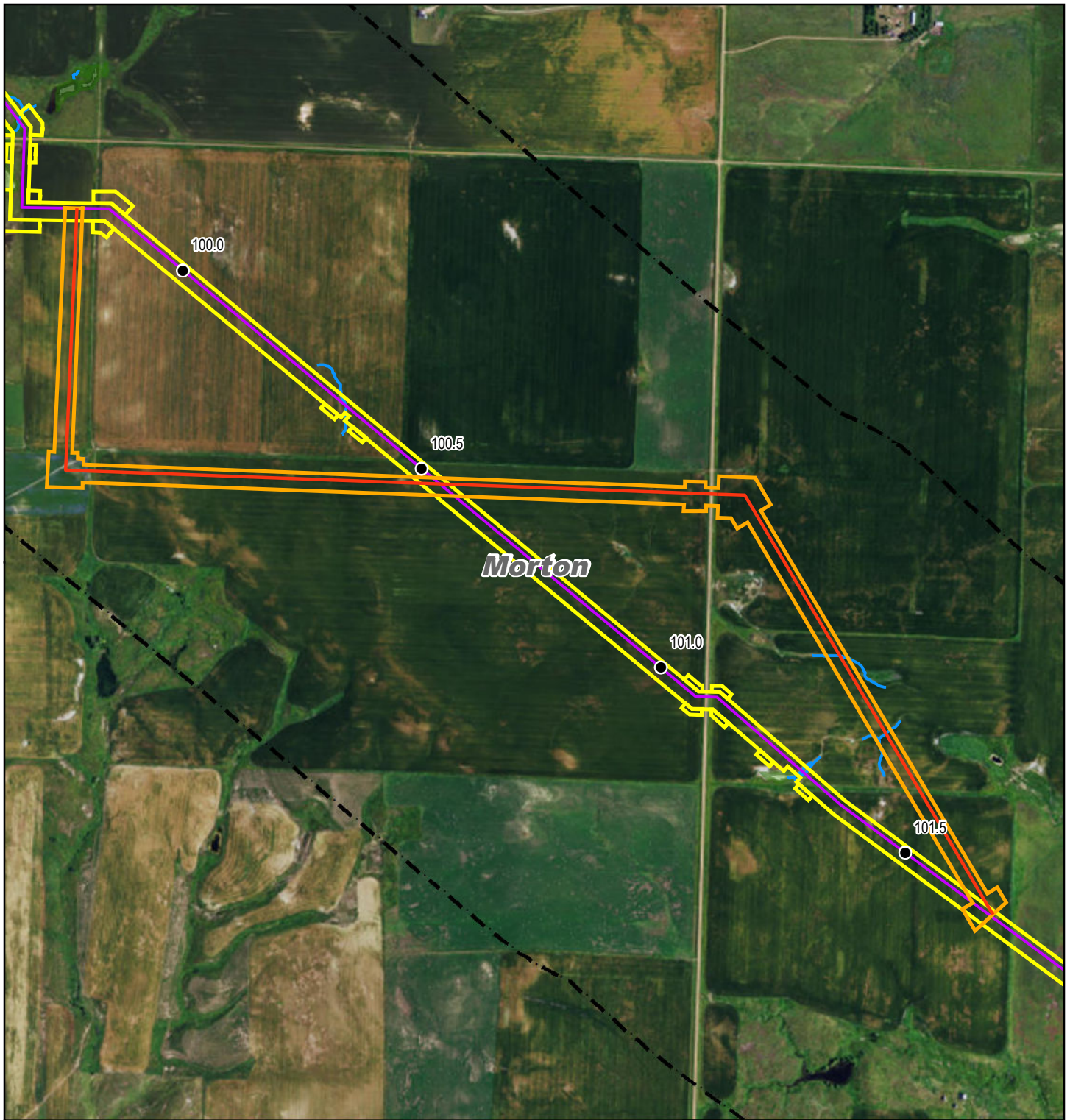
0 1,100 Feet

DAKOTA ACCESS, LLC


**Dakota Access Pipeline Project
North Dakota PSC
Reroute Location 6**

Page 6 of 18	1:13,200
NAD 1983 UTM Zone 14N	Date: September, 2015



- Milepost
- September 2015 Route
- December 2014 Route
- September 2015 Workspace
- December 2014 Workspace
- Waterbody
- Wetland
- PSC 1 Mile Study Area

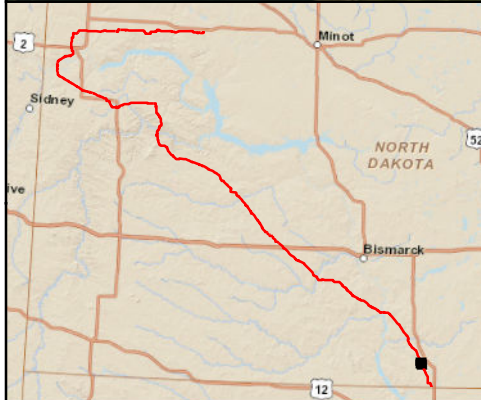
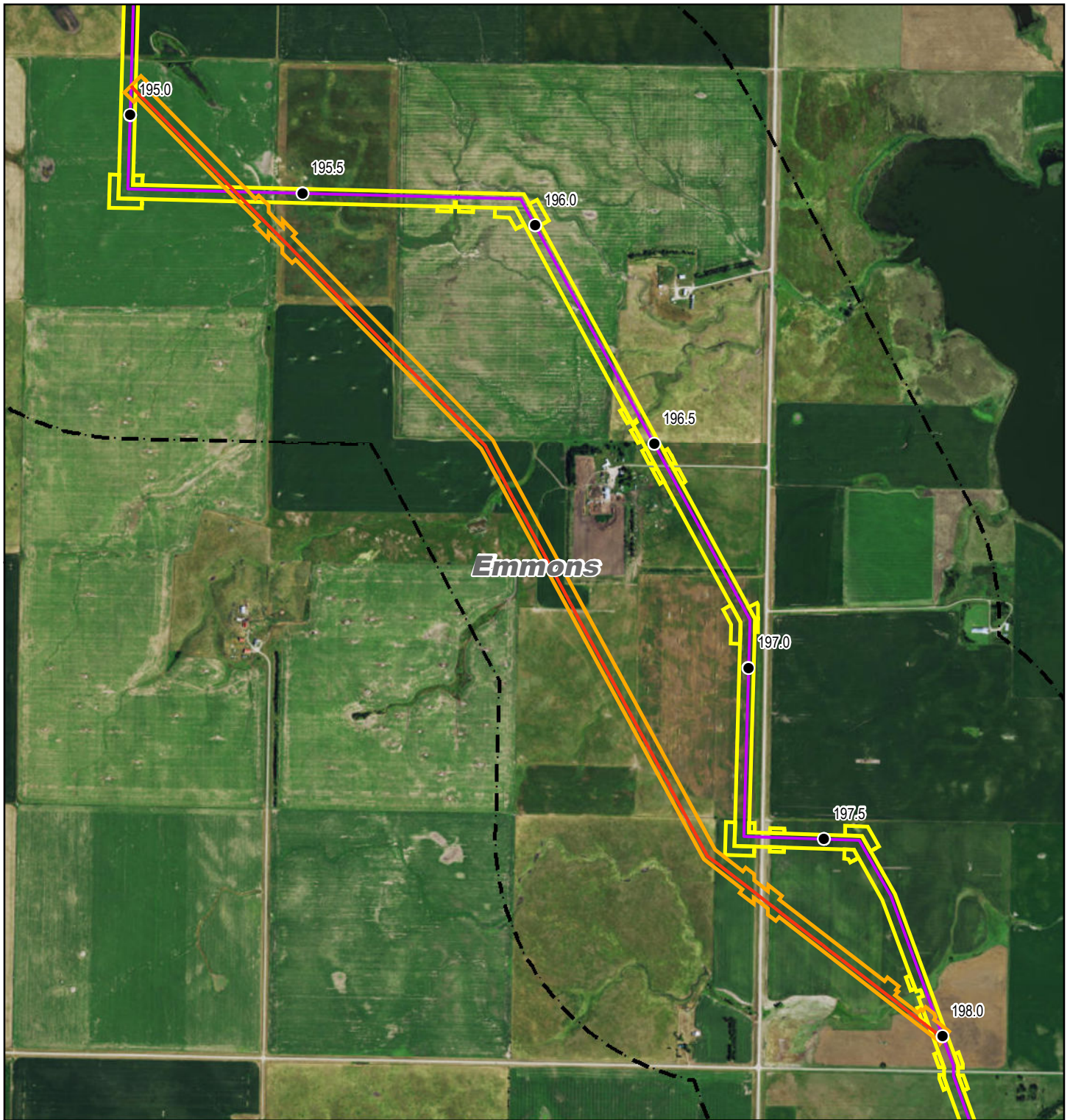
0 1,200 Feet



DAKOTA ACCESS, LLC

**Dakota Access Pipeline Project
North Dakota PSC
Reroute Location 7**

Page 7 of 18	1:14,400
NAD 1983 UTM Zone 14N	Date: September, 2015



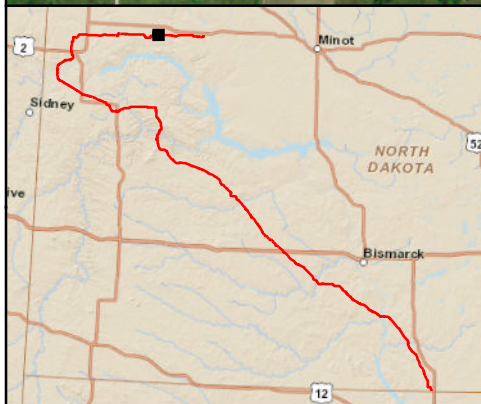
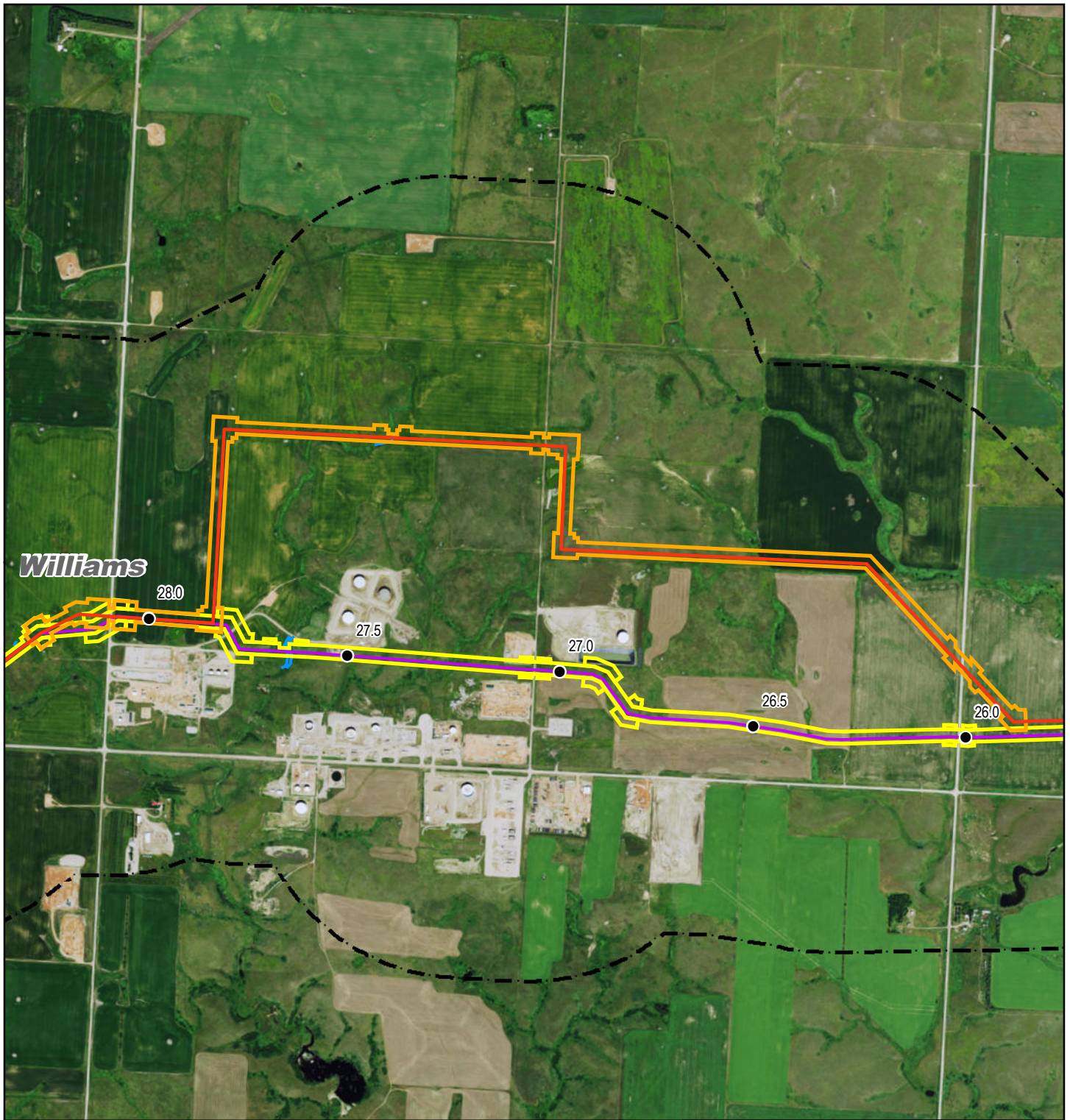
- Milepost
- September 2015 Route
- December 2014 Route
- September 2015 Workspace
- December 2014 Workspace
- Waterbody
- Wetland
- PSC 1 Mile Study Area

0 1,500 Feet

DAKOTA ACCESS, LLC



Dakota Access Pipeline Project
North Dakota PSC
Reroute Location 8

Page 8 of 18	1:18,000
NAD 1983 UTM Zone 14N	Date: September, 2015



- Milepost
- September 2015 Route
- December 2014 Route
- ▭ September 2015 Workspace
- ▭ December 2014 Workspace
- Waterbody
- Wetland
- ▭ PSC 1 Mile Study Area

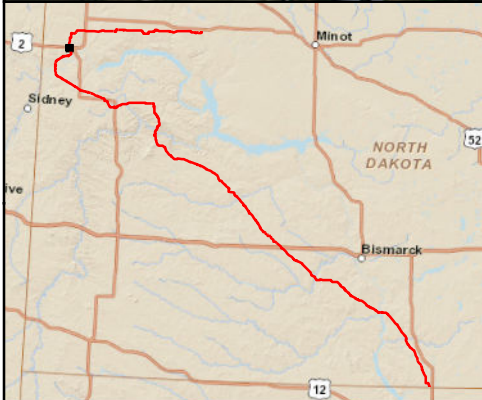
0 1,750 Feet

DAKOTA ACCESS, LLC



**Dakota Access Pipeline Project
North Dakota PSC
Reroute Location 9**

Page 9 of 18	1:21,000
NAD 1983 UTM Zone 14N	Date: September, 2015



- Milepost
- September 2015 Route
- December 2014 Route
- ▭ September 2015 Workspace
- ▭ December 2014 Workspace
- Waterbody
- Wetland
- ▭ PSC 1 Mile Study Area

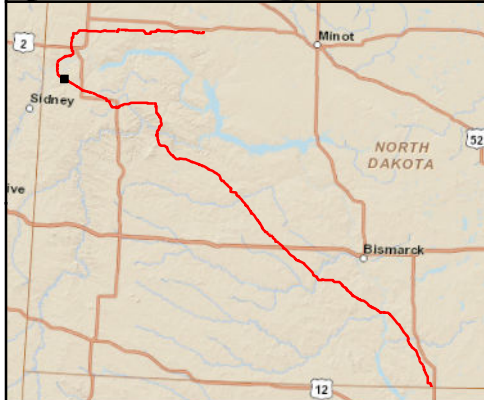
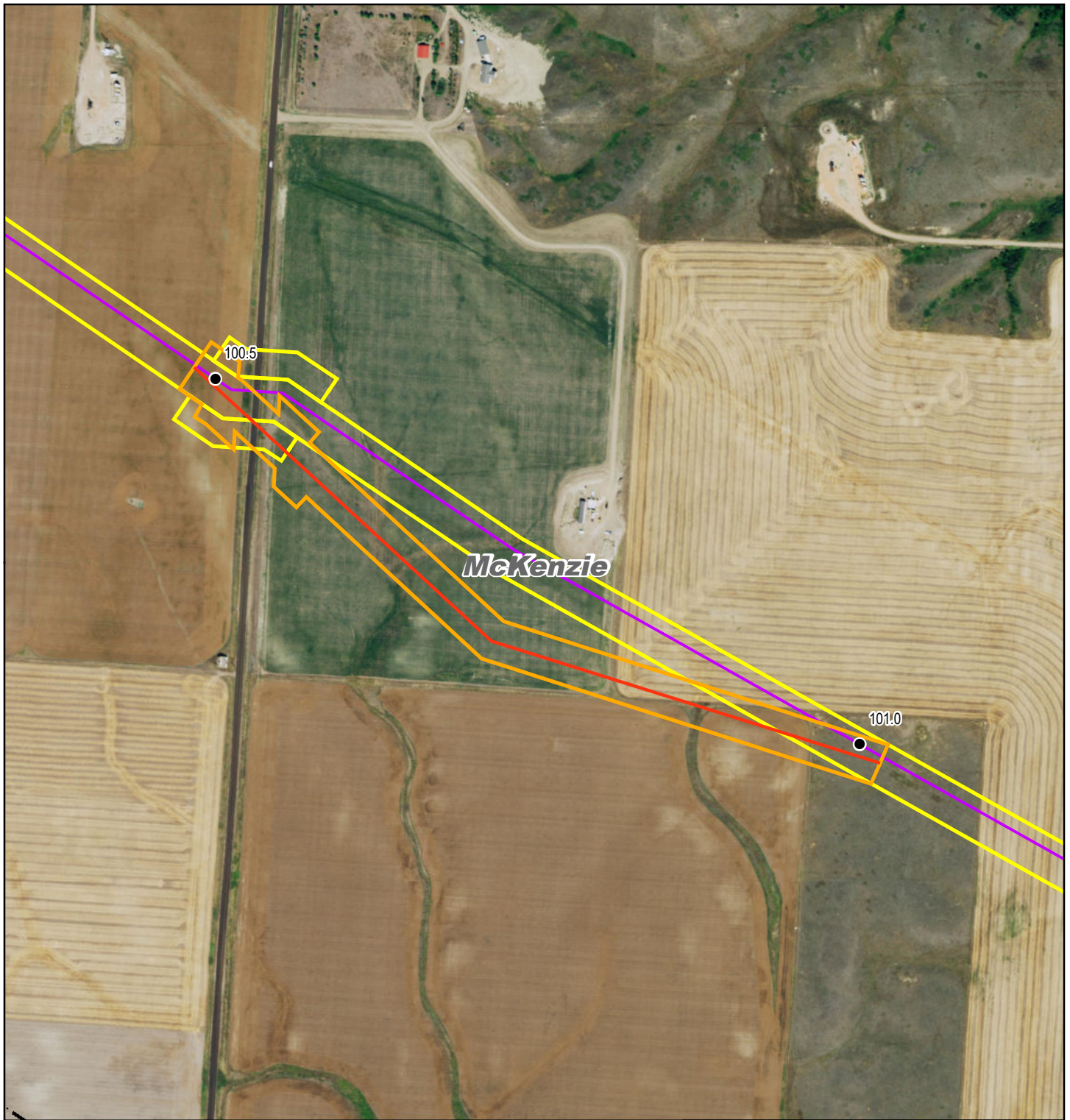
0 500 Feet

DAKOTA ACCESS, LLC


**Dakota Access Pipeline Project
North Dakota PSC
Reroute Location 10**


Page 10 of 18	1:6,000
NAD 1983 UTM Zone 14N	Date: September, 2015



- Milepost
- September 2015 Route
- December 2014 Route
- September 2015 Workspace
- December 2014 Workspace
- Waterbody
- Wetland
- PSC 1 Mile Study Area

0 500 Feet

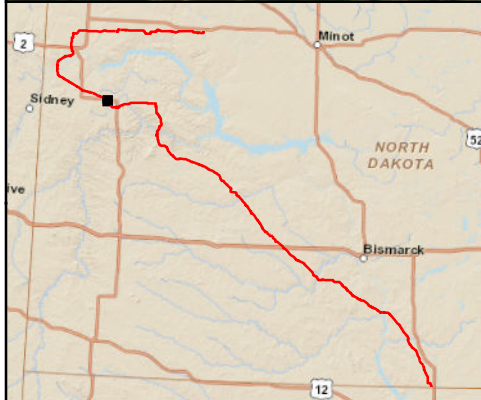
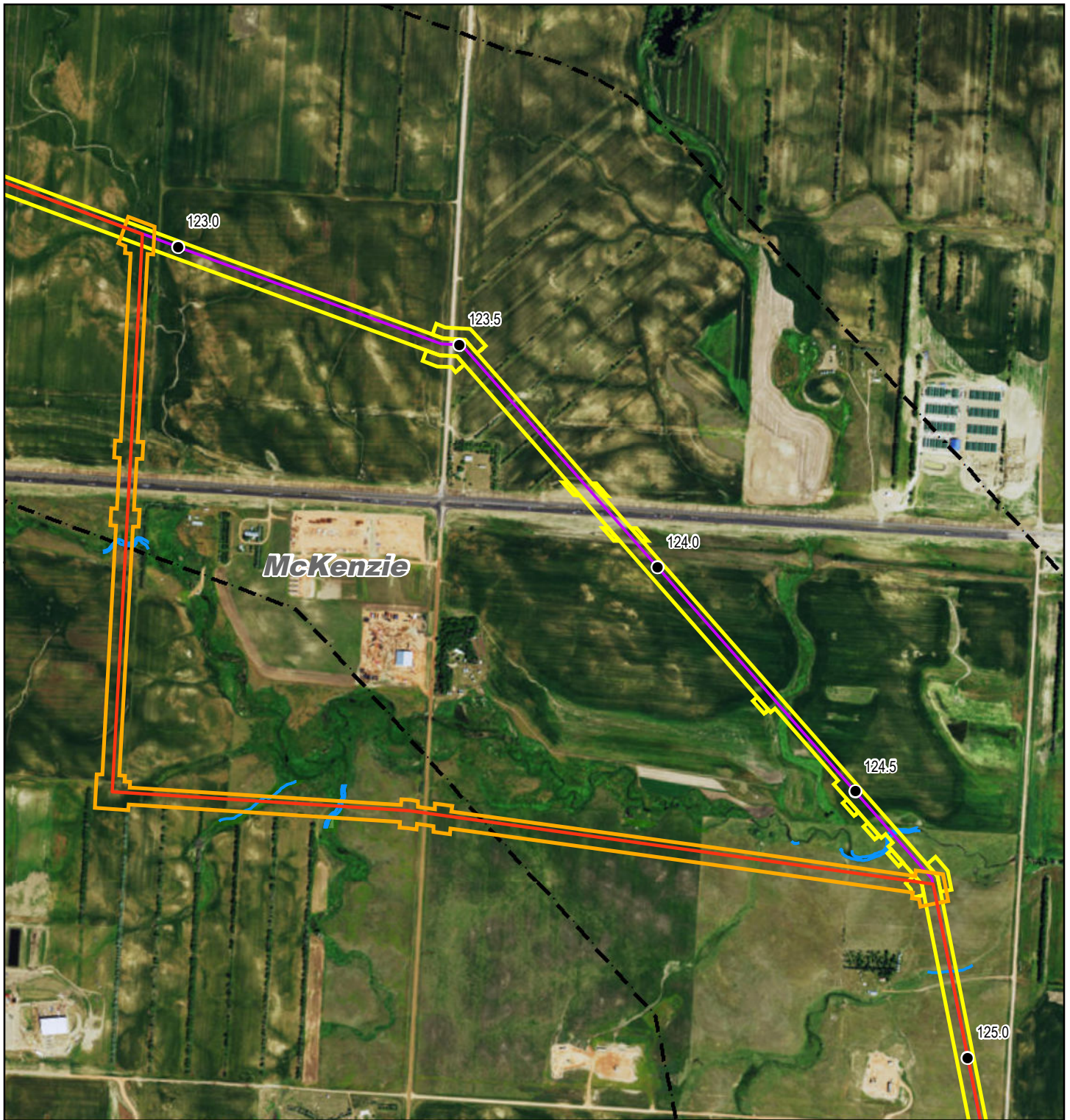




DAKOTA ACCESS, LLC



Dakota Access Pipeline Project
North Dakota PSC
Reroute Location 11

Page 11 of 18	1:6,000
NAD 1983 UTM Zone 14N	Date: September, 2015



- Milepost
- September 2015 Route
- December 2014 Route
- September 2015 Workspace
- December 2014 Workspace
- Waterbody
- Wetland
- PSC 1 Mile Study Area

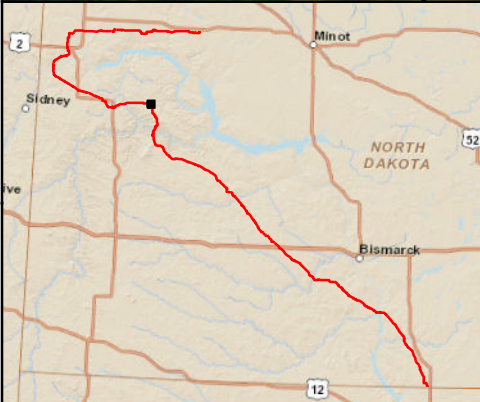
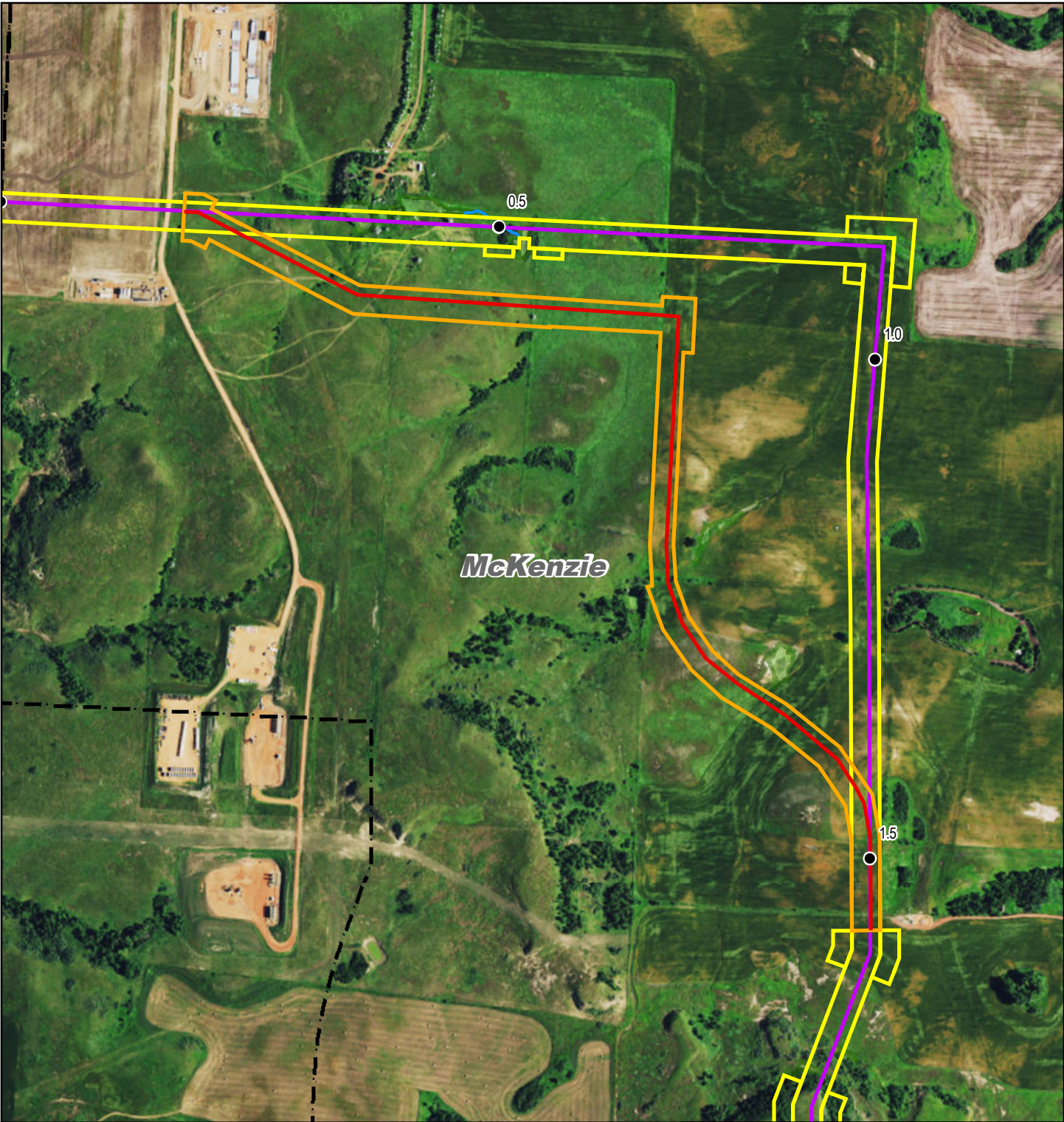
0 1,250 Feet

DAKOTA ACCESS, LLC


**Dakota Access Pipeline Project
North Dakota PSC
Reroute Location 12**

Page 12 of 18	1:15,000
NAD 1983 UTM Zone 14N	Date: September, 2015



- Milepost
- September 2015 Route
- December 2014 Route
- September 2015 Workspace
- December 2014 Workspace
- Waterbody
- Wetland
- PSC 1 Mile Study Area

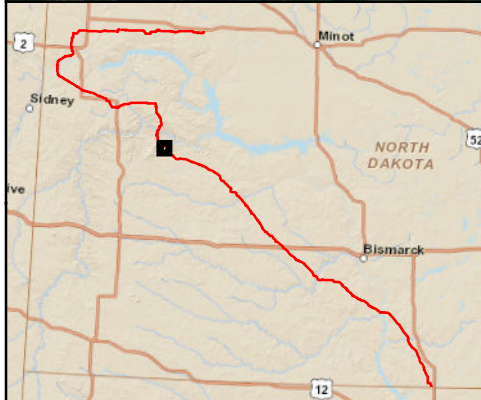
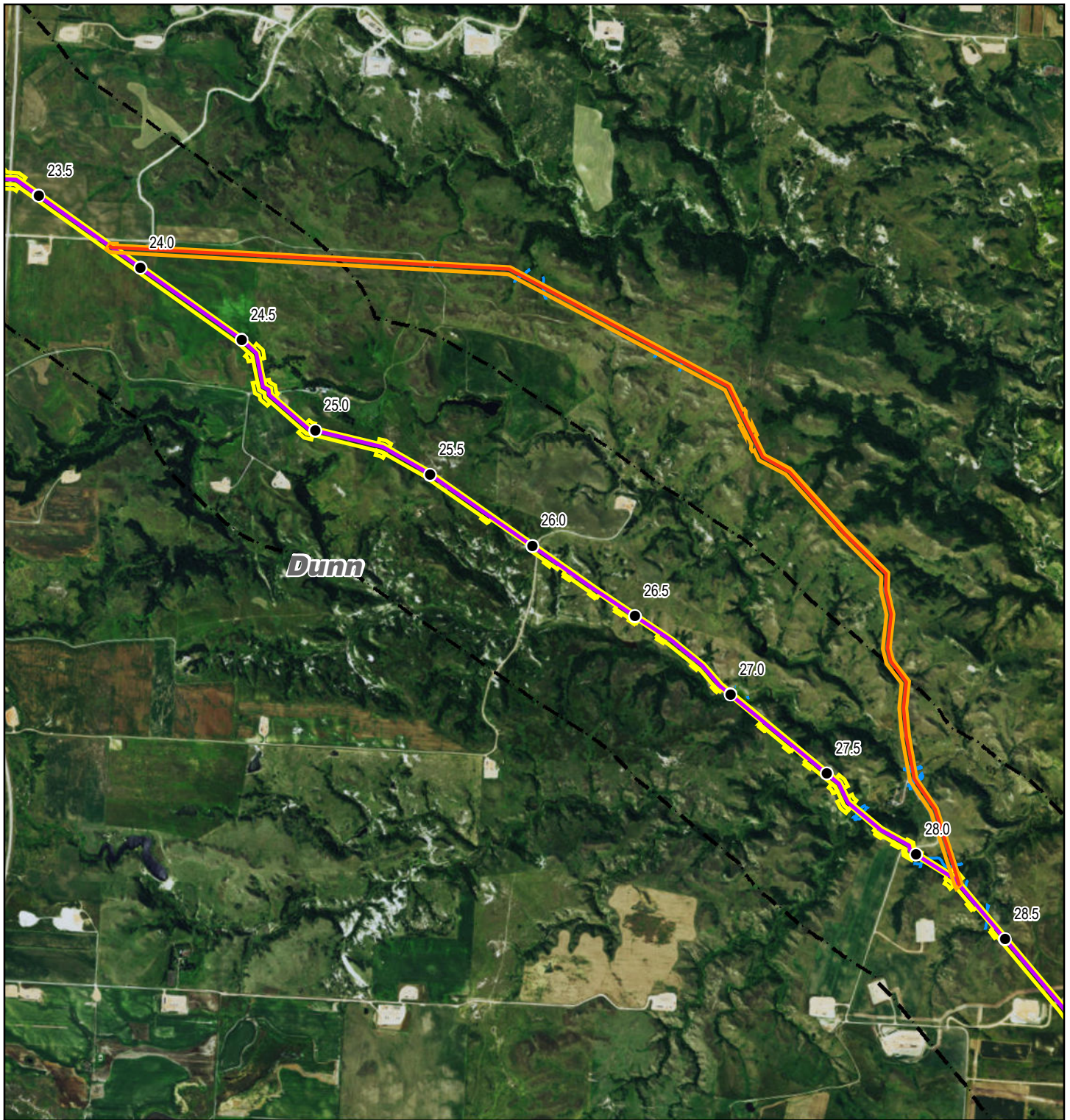
0 750 Feet




DAKOTA ACCESS, LLC



**Dakota Access Pipeline Project
North Dakota PSC
Reroute Location 13**

Page 13 of 18	1:9,000
NAD 1983 UTM Zone 14N	Date: September, 2015



- Milepost
- September 2015 Route
- December 2014 Route
- September 2015 Workspace
- December 2014 Workspace
- Waterbody
- Wetland
- - - PSC 1 Mile Study Area

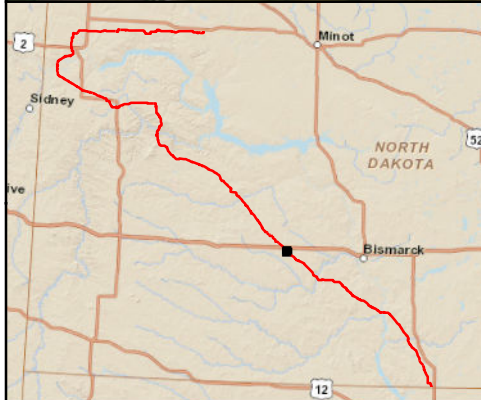
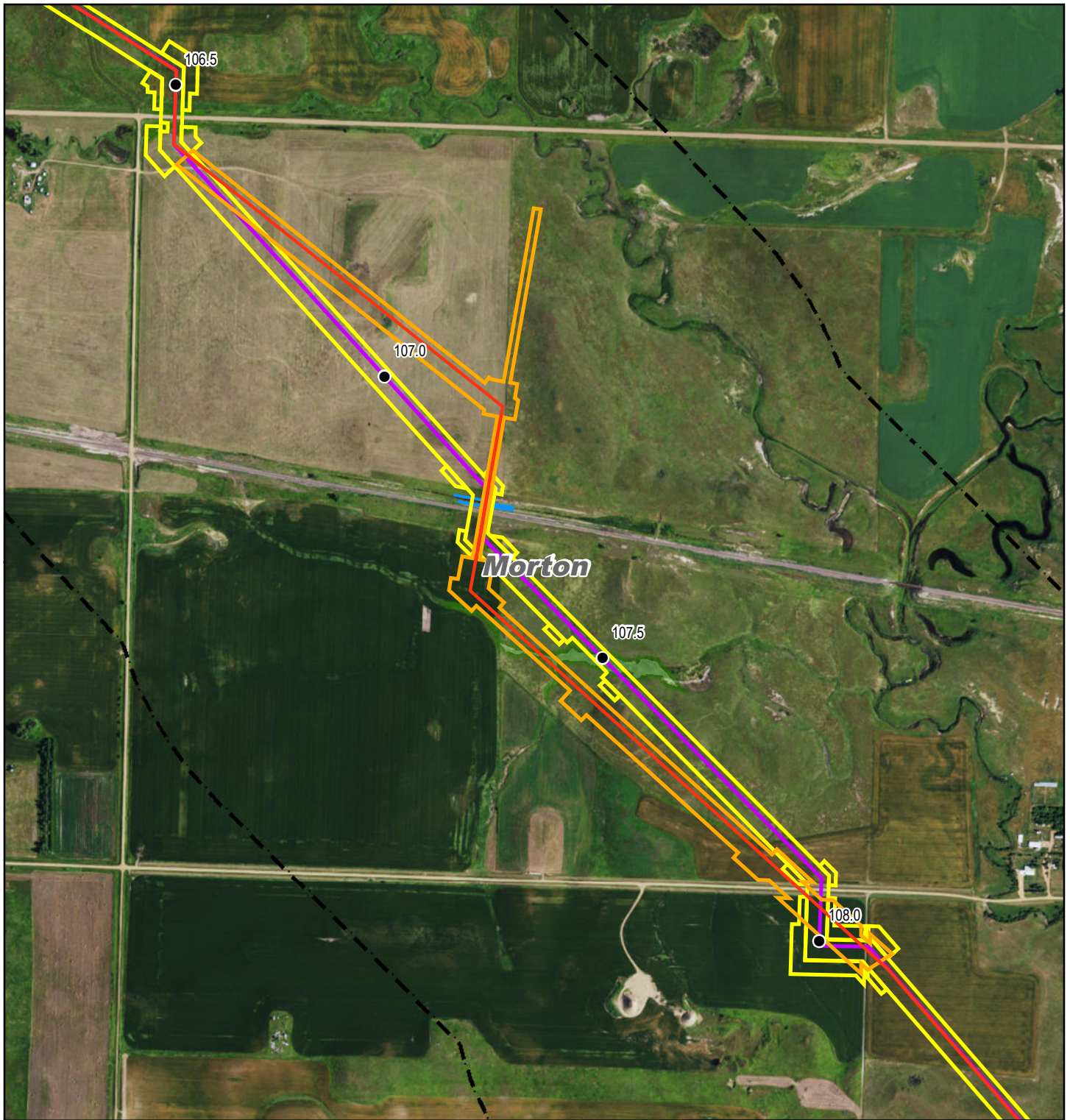
0 3,000 Feet

DAKOTA ACCESS, LLC



**Dakota Access Pipeline Project
North Dakota PSC
Reroute Location 14**

Page 14 of 18	1:36,000
NAD 1983 UTM Zone 14N	Date: September, 2015



- Milepost
- September 2015 Route
- December 2014 Route
- September 2015 Workspace
- December 2014 Workspace
- Waterbody
- Wetland
- PSC 1 Mile Study Area

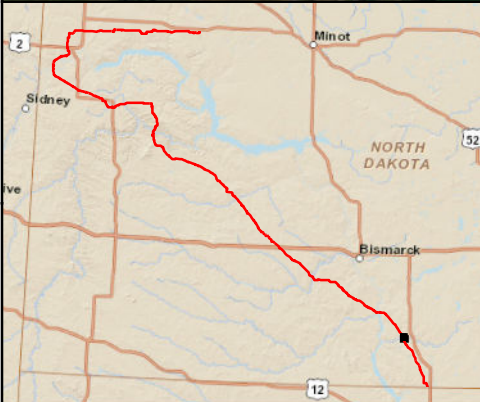
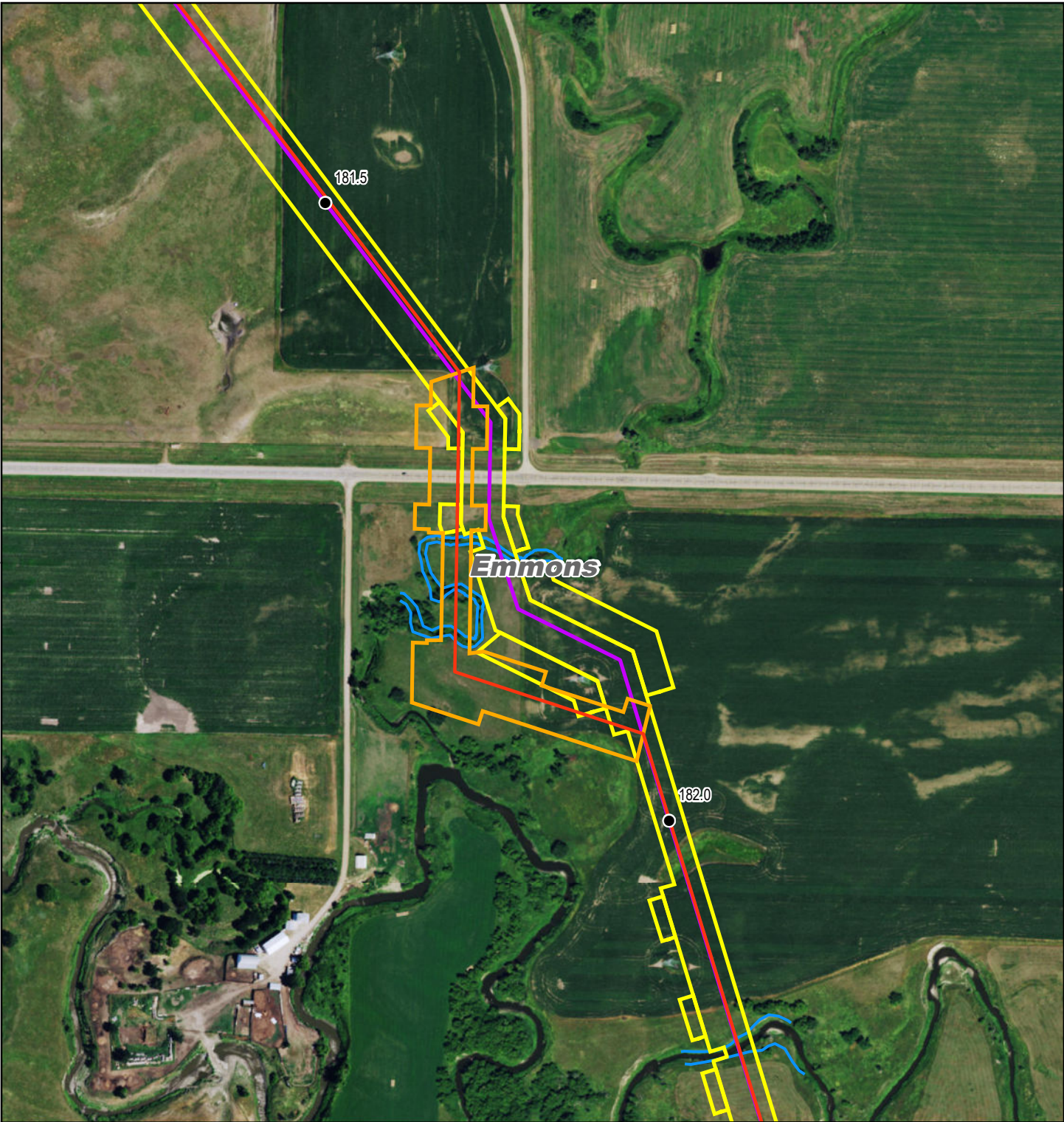
0 1,000 Feet

DAKOTA ACCESS, LLC


**Dakota Access Pipeline Project
North Dakota PSC
Reroute Location 15**

Page 15 of 18	1:12,000
NAD 1983 UTM Zone 14N	Date: September, 2015



- Milepost
- September 2015 Route
- December 2014 Route
- September 2015 Workspace
- December 2014 Workspace
- Waterbody
- Wetland
- ▭ PSC 1 Mile Study Area

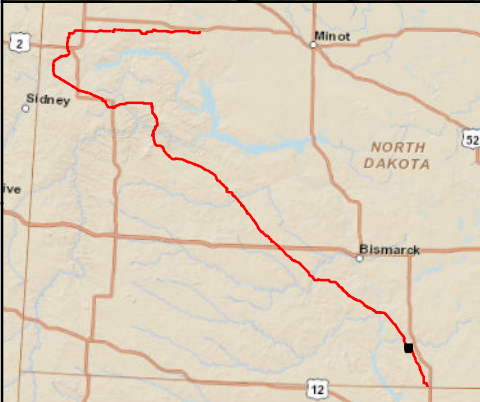
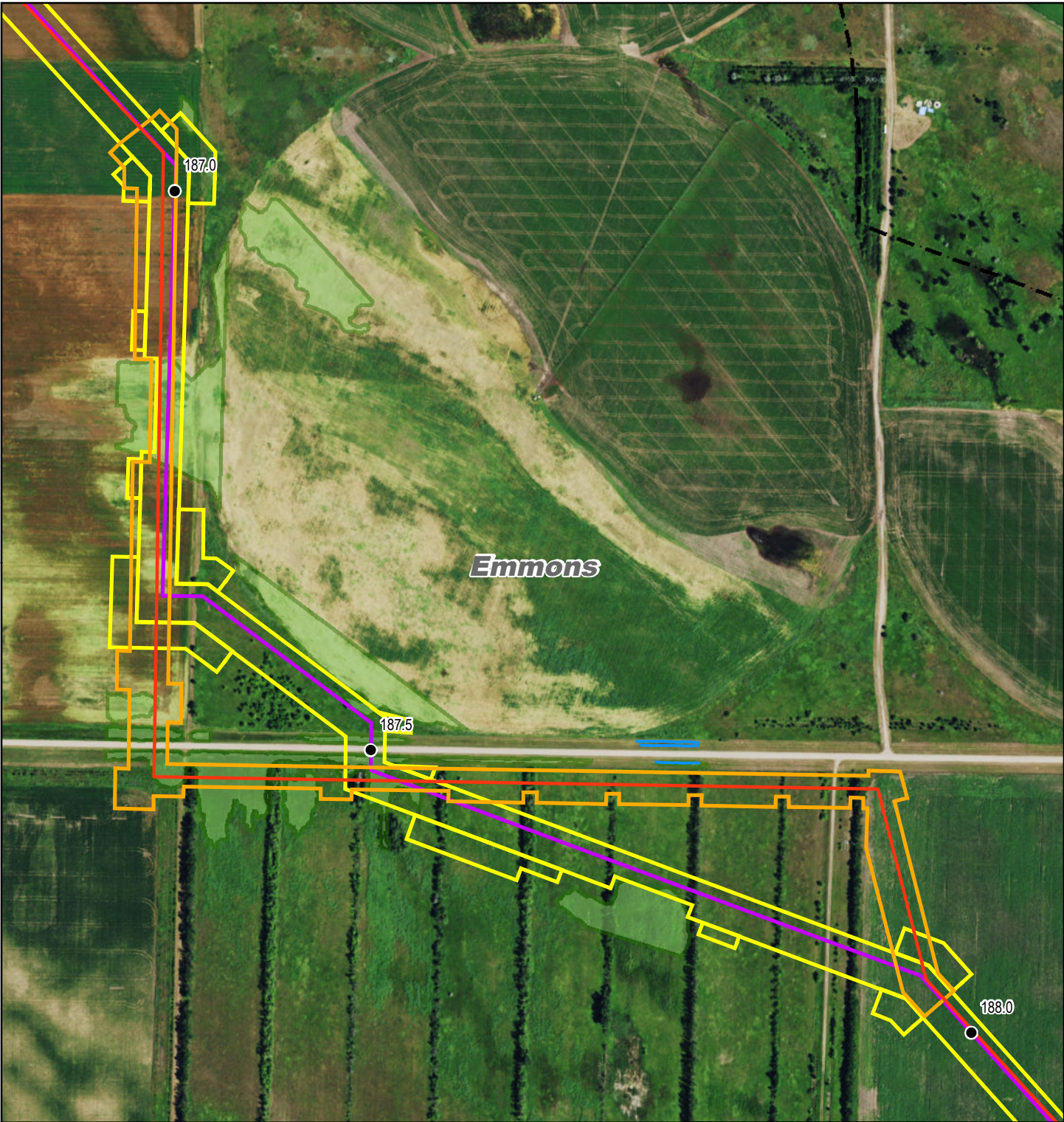
0 500 Feet




DAKOTA ACCESS, LLC


**Dakota Access Pipeline Project
North Dakota PSC
Reroute Location 16**

Page 16 of 18	1:6,000
NAD 1983 UTM Zone 14N	Date: September, 2015



- Milepost
- September 2015 Route
- December 2014 Route
- September 2015 Workspace
- December 2014 Workspace
- Waterbody
- Wetland
- - - PSC 1 Mile Study Area

0 540 Feet




DAKOTA ACCESS, LLC

**Dakota Access Pipeline Project
North Dakota PSC
Reroute Location 17**

Page 17 of 18	1:6,567
NAD 1983 UTM Zone 14N	Date: September, 2015

BEFORE THE PUBLIC SERVICE COMMISSION
OF THE STATE OF NORTH DAKOTA

In the Matter of the Application of Dakota
Access LLC for a Certificate of Site
Compatibility and Route Permit for the
Dakota Access Pipeline Project in
Mountrail, Williams, McKenzie, Dunn,
Mercer, Morton and Emmons Counties,
North Dakota

CASE NO. PU-14-842

AFFIDAVIT OF SERVICE BY MAIL

STATE OF NORTH DAKOTA)
)§
COUNTY OF BURLEIGH)

Lisa Crowley, being first duly sworn on oath, deposes and says: That she is a citizen of the United States over the age of eighteen years and not a party to, nor interested in, the above entitled action.

That on the 14th day of September, 2015, this affiant did deposit in the United States Post office at Bismarck, North Dakota, a true and correct copy of seventeen route adjustments to the Application for Certificate of Corridor Compatibility and Route Permit.

That the documents with postage prepaid were mailed, directed to the persons to be served at their last known post office address as follows:

Zachary E. Pelham
Pearce & Durick
314 E. Thayer Ave.
Bismarck, ND 58501

Derrick Braaten
109 North Fourth Street, Ste. 100
Bismarck, ND 58501-4003

Bryan Van Grinsven
Wells Fargo Bk. Center
15 Second Ave. SW #305
PO Box 998

Minot, ND 58702-0998

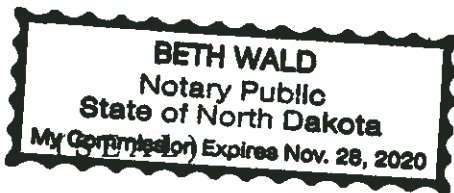
Bryan L. Giese
Attorney at Law
107 First Ave. NW
Mandan, ND 58554-3150

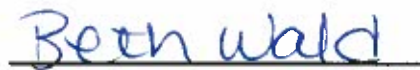
To the best of affiant's knowledge, the address above given is the actual post office address of the party intended to be served.



Lisa Crowley

Subscribed and sworn to before me this 14th day of September, 2015.





Notary Public
Burleigh County, North Dakota
My Commission Expires: